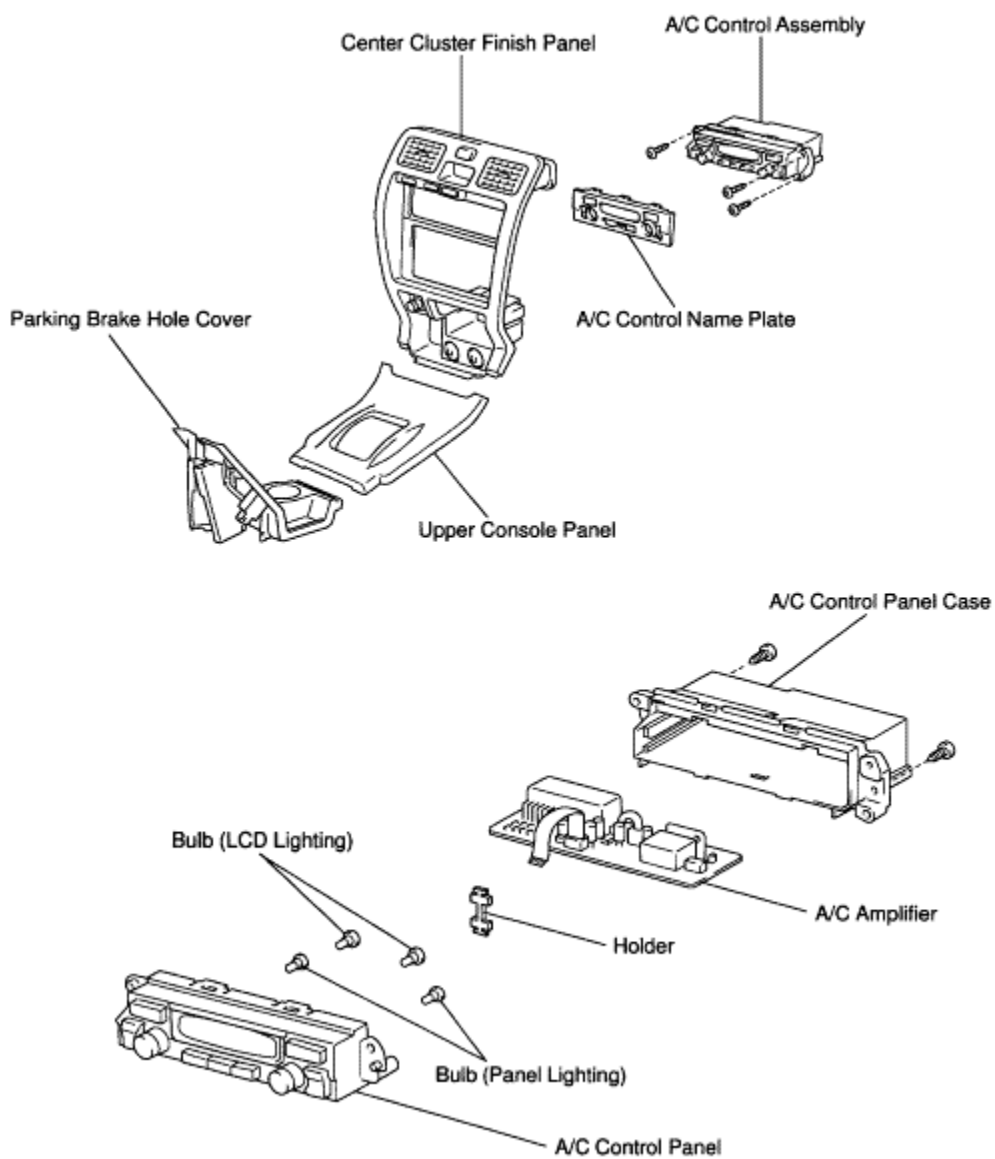
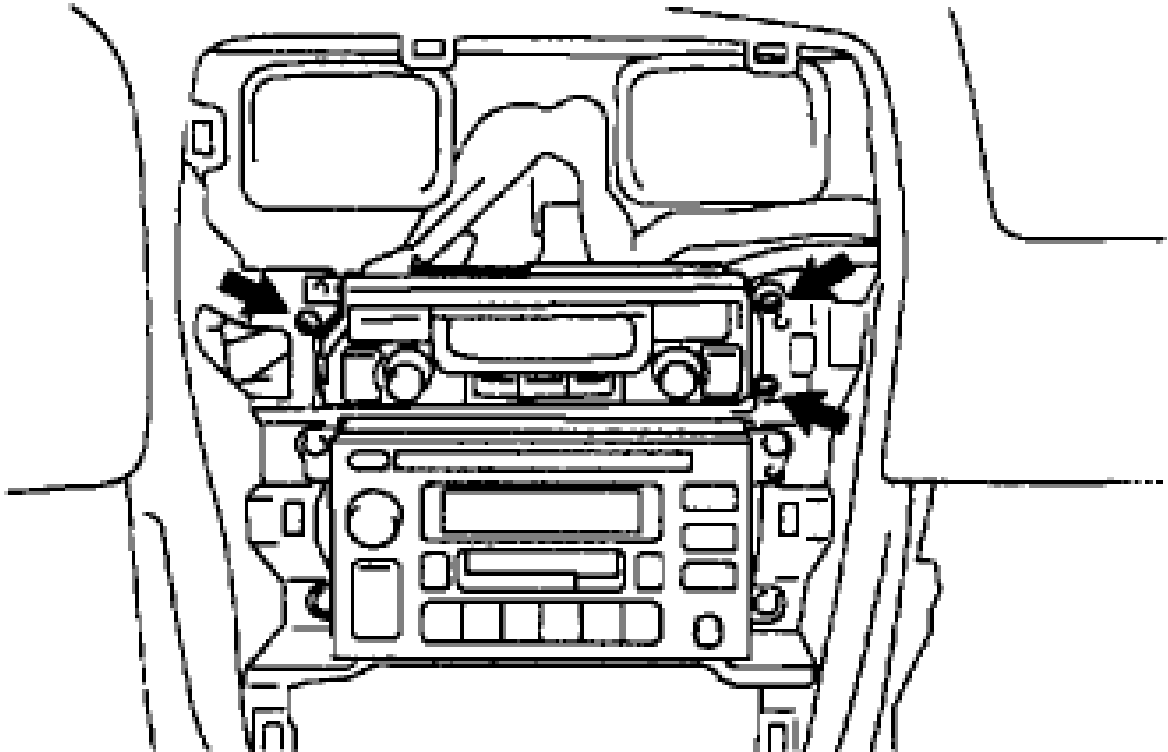


TOYOTA 4 RUNNER 1999 TO 2002 CLIMATE CONTROLLER REMOVAL INSTRUCTIONS



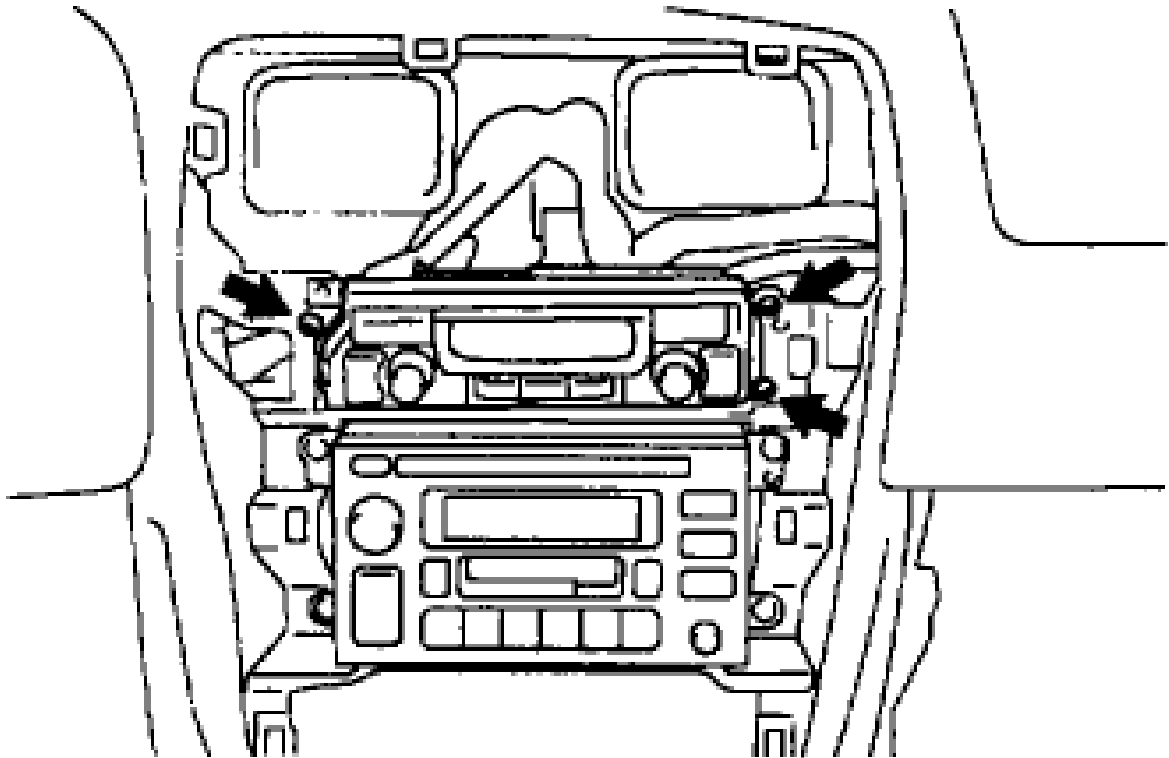
COMPONENTS REMOVAL

1. REMOVE PARKING BRAKE HOLE COVER
2. REMOVE UPPER CONSOLE PANEL
3. REMOVE CENTER CLUSTER FINISH PANEL



4. REMOVE A/C CONTROL ASSEMBLY
 - a. Remove the A/C control name plate.
 - b. Remove the 3 screws and A/C control assembly, then disconnect the connector.

INSTALLATION



INSTALL A/C CONTROL ASSEMBLY

- a. Install the A/C control assembly with the 3 screws, then connect the connector.
 - b. Install the A/C control name plate.
-
2. INSTALL CENTER CLUSTER FINISH PANEL
 3. INSTALL UPPER CONSOLE PANEL
 4. INSTALL PARKING BRAKE HOLE COVER