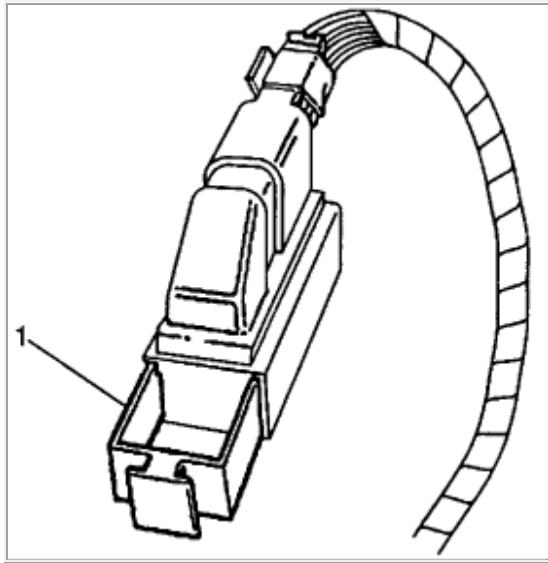


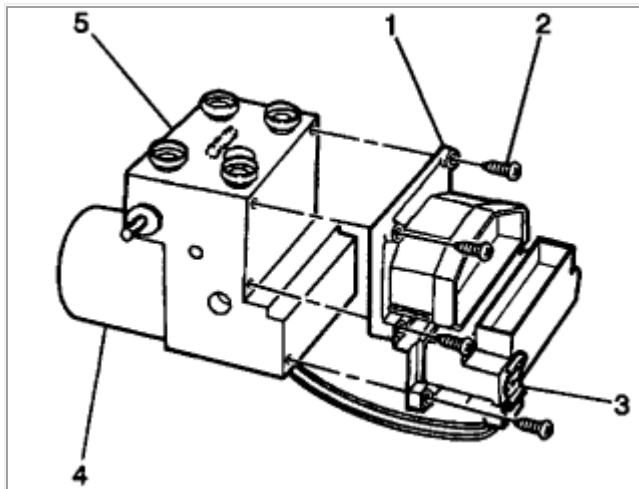
GRANPRIX GTP ABS MODULE REMOVAL INSTRUCTIONS
DO NOT REMOVE THE HYDRAULIC ASSEMBLY LINES ONLY REMOVE
THE EBCM ELECTRONICS MODULE.

REMOVAL PROCEDURE

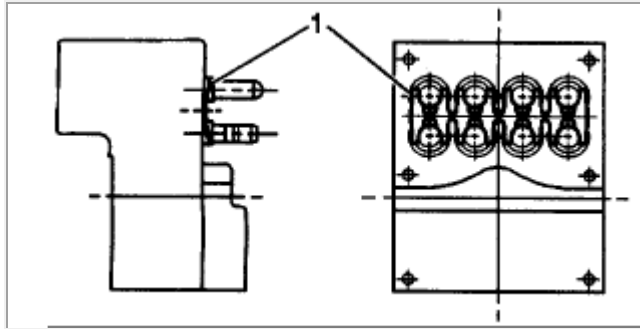
NOTICE: To prevent equipment damage, never connect or disconnect the wiring harness connection from the Electronic Brake and Traction Control Module(**EBTCM**) with the ignition switch in the RUN position.



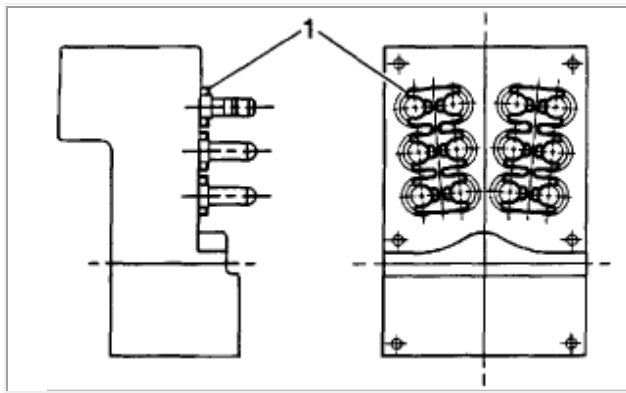
1. Turn the ignition switch to the OFF position.
2. Pull out lock tab from the EBTCM harness connector (1).
3. Disconnect the EBTCM harness connector.



4. Disconnect the pump motor connector (3) at the bottom of the EBTCM.
5. Remove the six EBTCM to Brake Pressure Modulator Valve (**BPMV**) screws (2) and discard. **IMPORTANT:** Be careful not to damage seal. Do not pry apart using a tool. **IMPORTANT:** Care must be taken not to damage the solenoid valves when the EBTCM is removed from the BPMV.
6. Separate the EBTCM (1) from the BPMV (5) by gently pulling apart until separated. **IMPORTANT:** Note the location and the orientation of the wave spring in order to aid during installation.

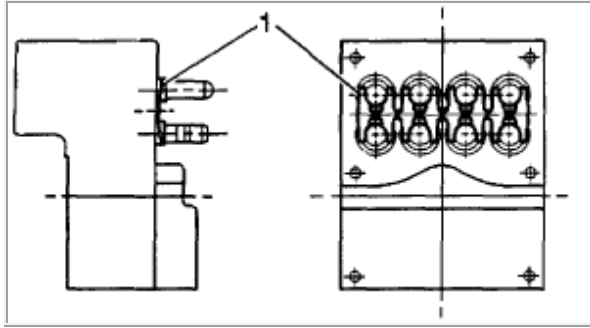


7. If equipped with ABS/ETS, remove one wave spring (1) between the EBTCM and BPMV . **IMPORTANT:** Note the location and the orientation of the wave springs in order to aid during installation.

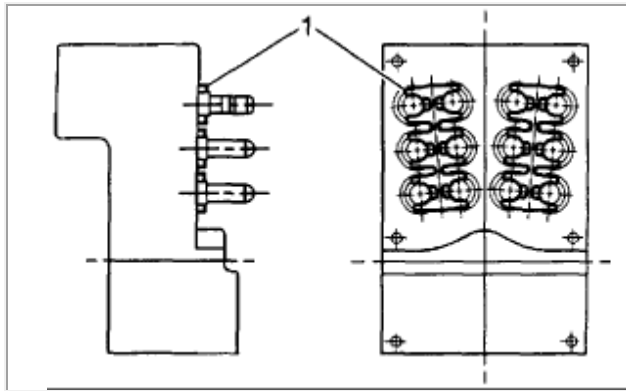


8. If equipped with ABS/TCS remove two wave springs (1) between the EBTCM and BPMV.

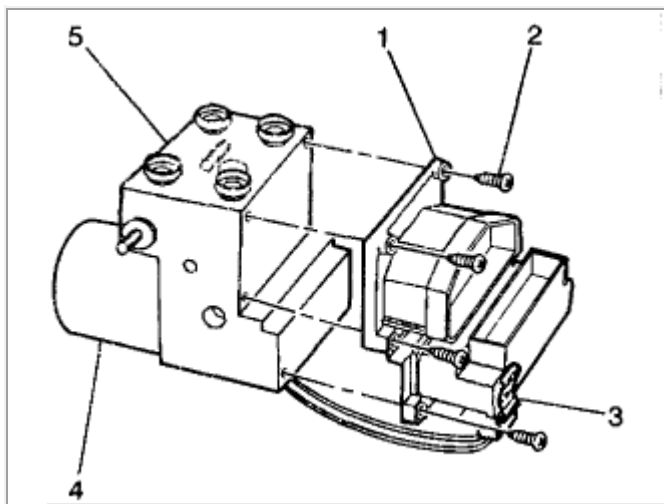
INSTALLATION PROCEDURE



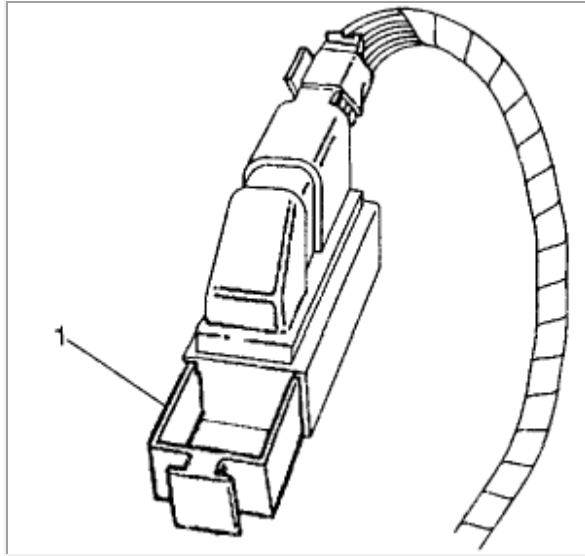
1. Clean the BPMV gasket surface with alcohol using a clean rag.
2. If equipped with ABS/ETS, install one wave spring (1) between the EBTCM and BPMV. Use location and orientation noted during removal.



3. If equipped with ABS/TCS, install the two wave springs (1) between the EBTCM and BPMV. Use locations and orientation noted during removal.



4. Install the EBTCM (1) to the BPMV (5).
 - Tighten the top four mounting screws (2) to **2.9 Nm (26 in. lbs.)**. Tighten screws in an X pattern.
 - Tighten the bottom two mounting screws (2) to **2.9 Nm (26 in. lbs.)**.
5. Connect the pump motor connector (3) to the bottom of the EBTCM.



6. Connect the EBTCM harness connector. Push in lock tab (1).
7. Turn the ignition switch to the RUN position, engine off.
8. Perform the Diagnostic System Check