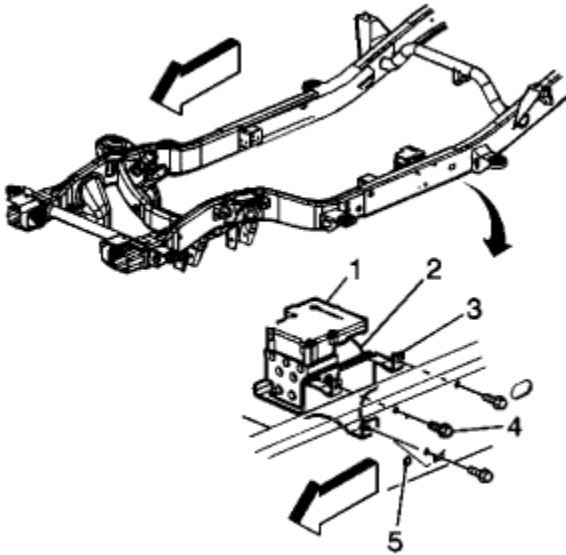


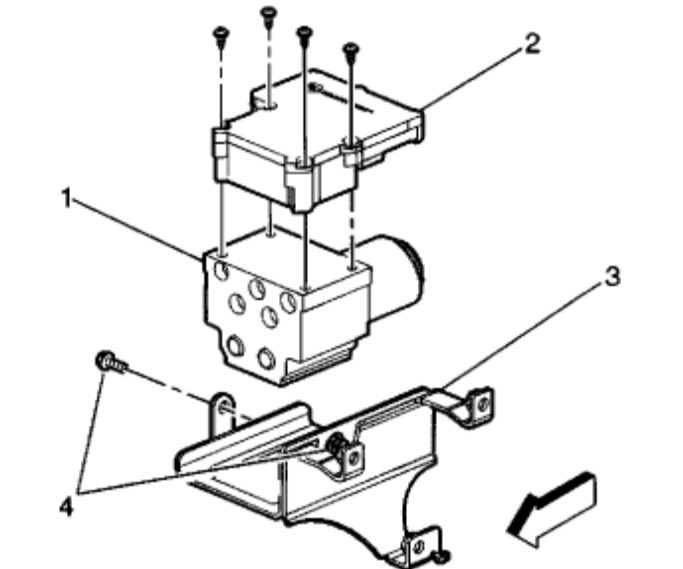
## REMOVAL & INSTALLATION PROCEDURE 1999 & UP GM SILVERADO /PU & SUV

1. Remove negative battery cable. **IMPORTANT:** Thoroughly wash all contaminants from around the EHCU. The area around the EHCU **MUST** be free from loose dirt to prevent contamination of disassembled ABS components.
2. Disconnect the three electrical harness connectors from the EBCM.
3. The EBCM module and BPMV pump assembly are located as a complete assembly beneath the driver's side floorboard on frame rail.



**DO NOT REMOVE THE BRAKE LINES OR PUMP ASSEMBLY**

3. Disconnect the 2-way ABS pump motor connector.
4. Remove the four T-25 Torx(R) bolts from the EBCM (2)

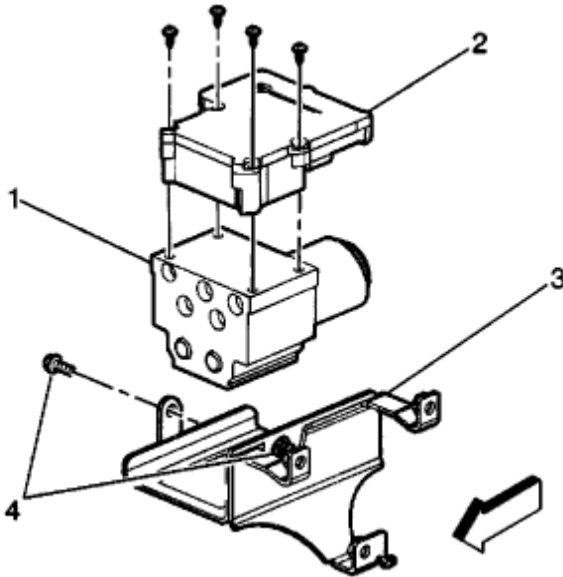


Remove the EBCM (2) from the BPMV (1). Removal may require a light amount of force.  
**IMPORTANT:** Do not use a tool to pry the EBCM or the BPMV. Excessive force will damage the EBCM

9. Clean the EBCM to BPMV mounting surfaces with a clean cloth.

### INSTALLATION PROCEDURE

**IMPORTANT:** Do not use RTV or any other type of sealant on the EBCM gasket or mating surfaces.



1. Install EBCM (2) onto BPMV (1).
2. Install the four EBCM bolts. **IMPORTANT**

Tighten the four bolts to **5 Nm (39 inch lbs.)** in an X-pattern

Connect the 2-way ABS pump motor connector to the EBCM.

Connect negative battery cable

**AUTO & TRUCK ELECTRONICS** [WWW.AUTOECU.COM](http://WWW.AUTOECU.COM)